

BREAKING NEWS - BOONE COUNTY FORESTS WORK FOR YOU!

The trees in your yard, in parks, by streams, along roads, and on farms and other open spaces in Boone County all make up the County's forest system. Whether they are young saplings or mature shade trees, the whole forest canopy is working together to provide you a better, safer, more beautiful place to live, work, and play.

TREES PERFORM MANY JOBS

Trees play an important role in Boone County beyond providing people shade on a hot day, scenic beauty, or a place for wildlife to thrive. Trees can:

- absorb and filter air pollution
- reduce energy consumption by shading buildings
- moderate stormwater flow and reduce flooding
- prevent soil erosion and stabilize hillsides
- improve water quality by buffering lakes, streams and rivers and filtering pollutants from stormwater
- increase property values and help businesses attract customers and retain employees



The Northern Kentucky Urban and Community Forestry Council has recently studied the size, location, and quality of Boone County's urban, suburban, and rural forests. With the help of local environmental consultants, the Davey Resource Group, and Northern Kentucky University's Center for Applied Ecology, the Council has discovered many facts about Boone County's forests.

DID YOU KNOW...

- Boone County has almost 59,400 acres of forest canopy
- Forests cover 36% of the County
- Boone County Forests consist of:
 - 5% large trees
 - 29% medium trees
 - 66% small trees
- 85% of all forest cover is found on land zoned for agricultural and residential use and is privately owned and not protected.

This information and full report has been presented to the Boone County Planning Commission, Boone Conservancy, Boone Soil and Water Conservation District, Home Builders of Northern Kentucky, and other interested groups. A copy of the full report and additional maps can be found on the Council's website or by visiting the Boone County Extension office.

TREES PROVIDE VALUABLE BENEFITS

All trees provide benefits, but the large crown trees in undisturbed forest areas provide the most benefits. Here are just two examples:

Stormwater Control Benefits

1. Trees intercept rainfall. Tree canopies capture and store rainfall on their leaf and woody surfaces.
2. Forests absorb water. Rainfall reaching the ground soaks into the soil. Forest trees can either directly absorb the water through their extensive root systems for their own needs, or water is absorbed into the forest soil and slowly released underground to streams.
3. Trees filter pollutants. The filtering of rainwater and surface runoff through a forest and the forest soils traps pollutants before they reach streams.
4. Forests decrease flooding. Forests protect us and our property by their ability to store and slowly release excess stormwater. When stormwater runoff quantities peak rapidly and very early during storms, often the existing structural stormwater management devices are overwhelmed and severe damage is caused by widespread flooding and quickly moving waters.



Stormwater flooding, erosion and pollution are the results of forest removal and are serious problems in Boone County.



Forests and streams are natural controls for stormwater problems.

Property Value Benefits

1. Healthy mature trees add an average of 10% to a property's value, and there is a 27% increase in development land values when trees are present.
2. Forests and trees can stimulate economic development by attracting new business and encouraging tourism. For instance, small businesses ranked the presence of forests and parks #1 of all the factors used in choosing a new location.
3. Commercial retail areas with trees are more attractive to shoppers.
4. Homes sell and apartments rent more quickly and people stay longer in an area when there are trees present and forests nearby.



Trees increase our property's value, and create a place we can call home.



The presence of trees in this new development would add value and benefits to all the residents.

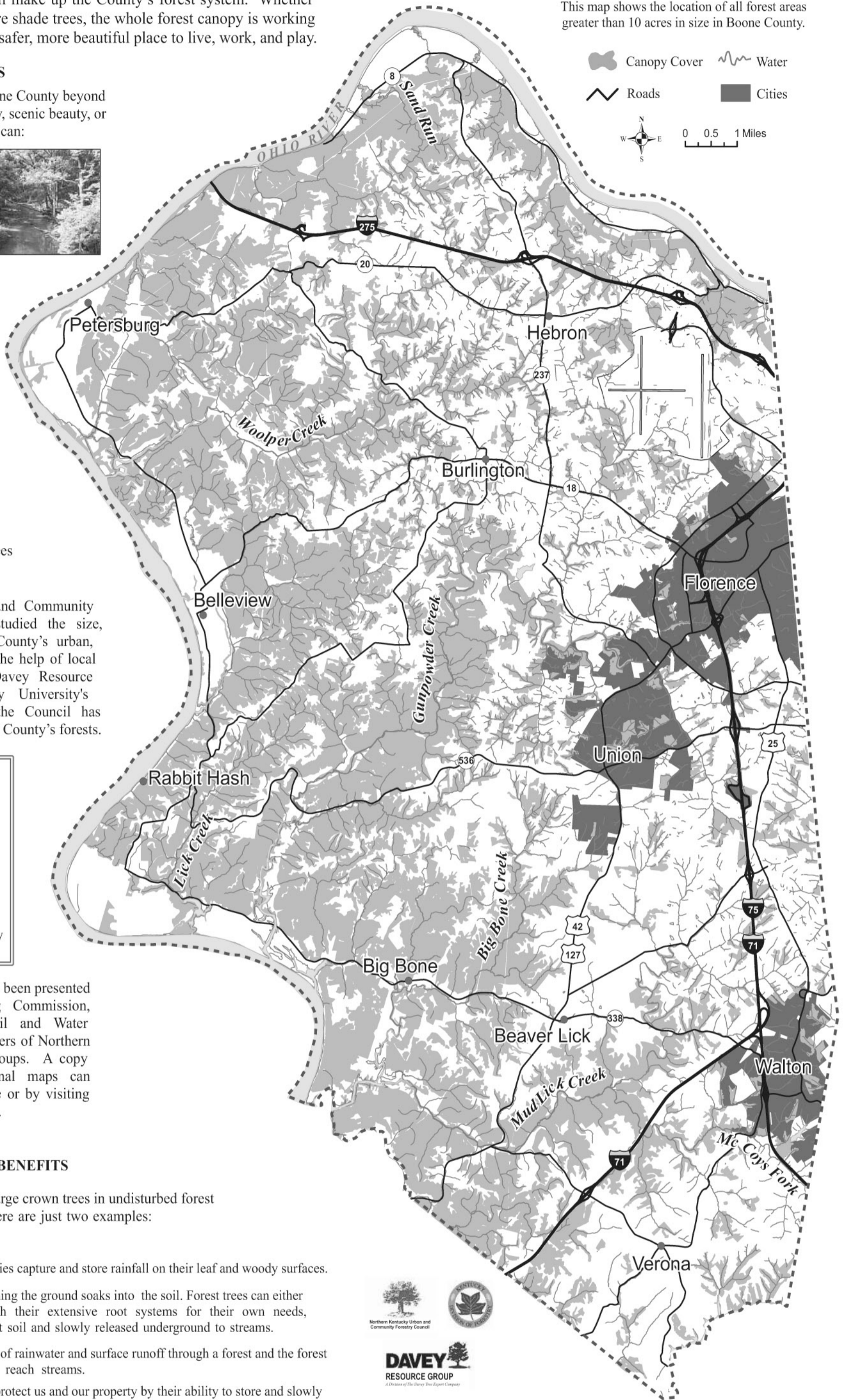
FOREST CANOPY COVER MAP

This map shows the location of all forest areas greater than 10 acres in size in Boone County.

Canopy Cover Water

 Roads Cities

 Scale: 0 0.5 1 Miles



TAKE ACTION & LEARN MORE ABOUT BOONE COUNTY'S FORESTS

The Council believes protecting Boone County's existing forests and planting new trees are the best ways to insure that current and future citizens receive the most benefits from the forests and be guaranteed the high quality of life that we now enjoy. And this goal is best accomplished through informed, comprehensive planning and action.

You can help protect our forests and preserve a better future for Boone County by planting trees, using conservation techniques during land development, joining local tree boards, contacting your elected officials and let them know that you believe forests should be conserved, practicing good forest management on your land or farm, and consulting with professional foresters, Certified Arborists, and other natural resource experts to learn more about trees and forests.

The Northern Kentucky Urban and Community Forestry Council is an interdisciplinary group of interested citizens and professionals whose mission is to help improve and manage their community's trees and green spaces for future generations. The Council provides support to existing organizations and agencies as well as assistance to the development of new groups committed to community forestry issues. Their goal is to merge man-made and natural environments so both are accommodated and valued.

Information on Boone County and forest resources is available through these organizations:

- Boone County Planning Commission www.boonecountky.org/bcpc/main.htm
- Northern Kentucky Urban and Community Forestry Council www.nkyurbanforestry.org
- Boone County Urban Forestry Commission www.boonecountky.org/PC/UrbanForest.aspx
- Florence Tree Board www.cityofflorenceky.com/ps_urb_forest.htm
- Kentucky Division of Forestry www.forestry.ky.gov
- Boone County Extension <http://ces.ca.uky.edu/boone/>
- Boone County Arboretum www.bcarboretum.org/